



# Wavecom

*The Home of Innovative Technology*



## 2022 Digital Catalogue

*Electrical Safety, Testing and Measurement Equipment*



# About Us



## ***Keeping Australians Safe For Over 25 Years***

Since 1993, Wavecom Instruments have been selling to the Australian electrical community a wide range of test & measurement safety products. We developed our first Portable Appliance Tester in 2001, and since then have grown to be the largest Australian owned and operated PAT Tester manufacturer in the country. We have a proud history of providing the highest quality service and products, over time we've grown to become a major player in the Australian electrical industry.

## ***Top Quality Products And Service***

We have always strived to serve our customers with passion, providing the best products and support. Wavecom have recently expanded our product lines, offering a wider range of electrical appliance testers, RCD testers, multimeters and more, while still maintaining the quality and reliability we're known for. Our TnT and TnP appliance tester product lines are the reward for years of hard work, responding to our customers' needs, and our passionate desire to provide innovative and reliable products. As one of the last manufacturers of electrical appliance testers left in Australia, we're proud to develop, manufacture and distribute new and exciting products for the Australian electrical community.

## ***Dedicated To Providing The Best***

Wavecom Instruments are dedicated to developing and manufacturing the highest quality Electrical Appliance Testers and Electrical Safety Instruments, with a strong focus on using the latest technology pushing the boundaries in new and excited ways. Investing in local research and development of electrical safety products is a key part of why our products continue to impress, and we've proved that Australia can still produce high quality, innovative and reliable electrical testers.

We are also proud distributors for a wide range of electrical safety, testing and measurement products from renowned brands like SEW, Siglent, Korad, and more. Every product we sell undergoes rigorous testing for safety and reliability, and each new product is NATA tested to conform to Australian Standards. Working with Australian wholesalers & distributors, we're delighted to be able to sell our products to more Australians than ever before.

## ***Our Mission***

*"Providing the highest quality products and services to our valued customers"*

We know we wouldn't be where we are today without our customers, and everything we do is centred around serving you by providing the best products and customer service we can. Every happy customer is another proud achievement for Wavecom, and it's this attitude that has helped us continue to find new ways to innovate and improve our products. We're constantly working to add new features to make your life easier, improving our designs for ruggedness and reliability, and serving the Australian Electrical Community in any way we can.

## ***The Future of Wavecom***

We have come from humble beginnings to being a major player in electrical testing, and we're not done yet. We want to continue to develop new products, reach new customers and continue to be a leading player in the Australian Electrical Industry, and eventually look internationally, to show other countries the kind of innovative, quality products that Wavecom, and Australia have to offer.

# Index

Compare our Appliance Testers	4
TnP Prime Appliance Testers	6
TnT Titan Portable Appliance Testers	8
TnT Titan Portable Appliance Test Kits	10
TnT RCD Portable Appliance Testers	12
Gen 4 TnT Series	14
The 3PL Lite 3 Phase PAT Testers	16
The TnP 3PLM 3 Phase PAT Testers	18
Test Tags and Print Media	20
Electrical Safety Kits	25
The New WinPATS App	26
Other WinPATS Software	27
Tester Accessories	28
Meter Case	34
RCD Testers	35
Digital Multimeters	36
Clamp Meters	37
Earth Resistance Testers	38
Loop & Insulation Testers	39
General Purpose Testers	40
MilliOhm Meters	42
Voltage Detectors	43
Calibrations	44
Contact Information	45

# Compare our Testers

Portable Appliance Testers					
Model	TnT-EL	TnT-RCD	TnT-RCDX	TnT Titan	TnT Titan 20A
Class 1 and Class 2 Test	✓	✓	✓	✓	✓
Extension Lead/Polarity Tests	✓	✓	✓	✓	✓
Leakage Current Tests	✓	✓	✓	✓	✓
500V/250V Insulation Tests	✓	✓	✓	✓	✓
Mains Supply Tests	✓	✓	✓	✓	✓
Meter Mode	✓	✓	✓	✓	✓
RCD Tests		✓	✓	✓	✓
Power Measurement				✓	✓
3 Phase Testing					
25A Earth Bond Test					
1000V Insulation Test					
Load Current Capacity	10 Amps	10 Amps	20 Amps	10 Amps	20 Amps
USB Data Connectivity				✓	✓
PC Data Connectivity				✓	✓
Bluetooth Connectivity				✓	✓
Telstra 4G Ready Tablet				✓	✓
Samsung Galaxy Tab Active2 4G Tablet					
WinPATS App				✓	✓
Keyboard Connectivity				Optional	Optional
Integrated Tag Printer					
Memory (5,000 items)				✓	✓
Lithium Ion Battery		✓	✓	✓	✓
Wireless Scanner					
Integrated Isolation Transformer		✓	✓	✓	✓



Test and Print PAT Testers				3PL Lite Series		3PLM Series		
TnP-500	TnP Prime	TnP Prime 20A	The Black Phantom	TnT 3PL Lite	TnP 3PL Lite	TnP 3PLM 20A	TnP 3PLM 32A	TnP 3PLM 50A
✓	✓	✓	✓	✓	✓	✓	✓	✓
✓	✓	✓	✓	✓	✓	✓	✓	✓
✓	✓	✓	✓	✓	✓	✓	✓	✓
✓	✓	✓	✓	✓	✓	✓	✓	✓
✓	✓	✓	✓	✓	✓	✓	✓	✓
✓	✓	✓	✓	✓	✓	✓	✓	✓
✓	✓	✓	✓	✓	✓	✓	✓	✓
✓	✓	✓	✓	✓	✓	✓	✓	✓
				✓	✓	✓	✓	✓
						✓	✓	✓
						✓	✓	✓
10 Amps	10 Amps	20 Amps	10 Amps (20 Amp Version Available)	20 Amps	20 Amps	20 Amps	32 Amps	50 Amps
✓	✓	✓	✓	✓	✓	✓	✓	✓
✓	✓	✓	✓	✓	✓	✓	✓	✓
✓	✓	✓	✓	✓	✓	✓	✓	✓
	✓	✓		✓	✓	✓	✓	✓
			✓					
	✓	✓	✓	✓	✓	✓	✓	✓
✓	Optional	Optional	Optional	Optional	Optional	Optional	Optional	Optional
✓	✓	✓	✓		✓	✓	✓	✓
✓	✓	✓	✓	✓	✓	✓	✓	✓
✓	✓	✓	✓	✓	✓	✓	✓	✓
	✓	✓	✓		✓	✓	✓	✓
✓	✓	✓	✓	✓	✓	✓	✓	✓

# The TnP Prime

*The Most Advanced Portable Appliance Test and Print Kit Yet!*



## Features

- ◇ Our latest Integrated Test and Print PAT Tester
- ◇ Class 1, Class 2, RCD, Leakage and Extension Lead Tests
- ◇ Android 4G-Ready Telstra Tablet
- ◇ Bluetooth Connectivity
- ◇ WinPATS App license
- ◇ 10 Amp Load Current Capacity
- ◇ Powered by a Lithium Ion Battery
- ◇ A Built in Isolation Transformer for RCD Testing
- ◇ Conditional 24 month warranty
- ◇ Fully Australian designed & manufactured

The TnP Prime is the latest generation of Appliance Tester from Wavecom. Offering a fully integrated testing, tag printing and tag scanning system that integrates seamlessly with the new WinPATS App via Bluetooth, the TnP Prime is the cutting edge in appliance testing technology.

The TnP Prime offers a full range of AS/NZS 3760:2010 tests, including Class 1, Class 2, Extension Lead, RCD and Leakage testing. Simple test procedures, LED indicators and the integrated tag printer make high volume testing a breeze.

With the new WinPATS App you can now control your TnP Prime via Bluetooth. Using the included Telstra 4G-Ready Tablet you can conduct tests, print tags and get results straight to the palm of your hand. The TnP Prime will send test results straight to WinPATS and at the tap of a button your data is backed up to a secure web server provided by AWS. Every TnP Prime includes a voucher for 1 WinPATS App license valued at \$30+GST.

With the TnP Prime you'll never have to hand write another test tag again. The integrated thermal transfer printer prints clear, easy to read tags that last. Our tags are tested to ensure that your test results, barcode and logo don't fade over time. Use the included Bluetooth laser scanner to scan barcodes and access your test results, item information and test due dates with the new WinPATS App.

Featuring a telescoping handle and luggage wheels in addition to the usual carry handle, the TnP Prime is easier than ever to transport. The heavy duty transit case is manufactured from ultra high impact engineer structural material. Offering IP67 rated dust and water protection, as well as shock resistance, the TnP Prime can handle even the toughest work site.

Designed and Manufactured here in Australia, the TnP Prime is the cutting edge of PAT testing technology, and comes with a 24 month conditional warranty and 12 month calibration certificate.

# Models



**The TnP Prime**  
10 Amp Operation

**WCM-TNP-PRIME**



**The TnP Prime 20A**  
20 Amp Operation

**WCM-TNP-PRIME-20A**



**The Black Phantom**  
20 Amp Operation

**WCM-TNP-500PH**

# Specifications

Mains Supply Tests	Checks Polarity and continuity of mains supply by LED indicators (A-N, A-E, and N-E). Flashing red LED indicates test fail.
Class I Tests Earthed Appliance	Appliance Check: Ensures appliance is plugged in and turned on. Earth Bond Test: 200mA test current. Pass level Less than 1.0 $\Omega$ . Measurement: 0.01 $\Omega$ to 10 $\Omega$ . Insulation Test: 500VDC / 250VDC. Pass level Greater than 1M $\Omega$ . Measurement: 0.1 $\Omega$ to 10M $\Omega$ . <small>*See also: Leakage Test</small>
Class II Tests Double Insulated Appliance	Appliance Check: Ensures appliance is plugged in and turned on. Insulation Test: 500VDC / 250VDC. Pass level greater than 1M $\Omega$ . Measurement: 0.1 $\Omega$ to 10M $\Omega$ . <small>*See also: Leakage Test</small>
Extension Lead Tests	Earth Bond Test: 200mA test current. Pass level Less than 1 $\Omega$ . Measurement: 0.01 $\Omega$ to 10.0 $\Omega$ s. Insulation Test: 500VDC / 250VDC. Pass level Greater than 1M $\Omega$ . Measurement: 0.1 $\Omega$ to 10.0M $\Omega$ . Continuity/Polarity Test: 250VAC check continuity and polarity of leads. Displays Pass/Fail.
Power Measurement	Leakage Current: 0 to 30.0mA at 200 to 265V. Load Current: 0.0 to 10Amp (20Amp for TnP Prime 20A) Voltage: 200 to 265VAC - Power Factor: 0.00 to 1.00. Apparent Power: 0 to 2400VA - Power 0 to 2400W.
Meter Mode®	Green flashing LED denotes Meter Mode is engaged. Load Current: 0.0 to 10 Amps. Voltage: 200 to 265VAC. Apparent Power: 0 to 2400VA. Power: 0 to 2400W.
RCD Tests	Trip Current: 2 to 500mA in 1mA steps - User selectable. Trip Time: 0 to 3,000ms at .001sec resolution. Current Ramp Trip Test: 0 to 500mA in 1mA increments.
Leakage Tests	Leakage Current: 0 to 30.0mA at 200 to 265V. Earth Leakage Test: 240VAC Mains. Pass level 1, 2.5, 5.0 mA leakage test levels. <small>Note 1: Pass level for CLASS 1 is 5 mA; pass level for CLASS 2 is 1 mA. Note 2: Leakage test may be performed if a standard CLASS 1 or CLASS 2 is not possible.</small>
Memory	5000 Items Local Storage, virtually unlimited Cloud Storage with the new WinPATS App.
Battery	6700 mAh, 98WH, Charge Time Around 4 Hour
Bluetooth	Bluetooth Low Energy technology with inbuilt antenna, with over 50 metre range.
Tablet	8 inch 800 x 1280 HD screen, 4G Android tablet with 5 megapixel rear camera and 2 megapixel front camera, 1.28Ghz Quad Core processor with Android Go and docking accessories

# The TnT Titan

*Our Most Advanced Handheld Portable Appliance Tester*

## Features



- ◇ Class 1, Class 2, RCD, Leakage and Extension Lead Tests
- ◇ Android 4G-Ready Telstra Tablet
- ◇ Bluetooth Connectivity - Control your TnT Titan via the new WinPATS App
- ◇ 10 or 20 Amp Current Capacity
- ◇ Powered by a Lithium Ion Battery - Conduct over 3,000 sets of tests per charge
- ◇ Integrated Isolation Transformer for Portable RCD Testing
- ◇ Data Connectivity to PCs and Tablets via Micro USB and Bluetooth LE
- ◇ 24 Month conditional warranty and 12 month calibration certificate

The TnT Titan is the latest generation of Appliance Tester from Wavecom. Offering an easy to use Portable Appliance Testing system that integrates seamlessly with the new WinPATS App via Bluetooth, the TnT Titan is the cutting edge in appliance testing technology.

The TnT Titan offers a full range of AS/NZS 3760:2010 tests, including Class 1, Class 2, Extension Lead, RCD and Leakage testing. Simple test procedures and LED indicators make testing a breeze.

With the new WinPATS App you can now control your TnT Titan via Bluetooth. Using the included Telstra 4G-Ready Tablet you can conduct tests and get results straight to the palm of your hand. The TnT Titan will send test results straight to WinPATS and at the tap of a button your data is backed up

to a secure web server provided by AWS. The TnT Titan includes a voucher for 1 WinPATS App license valued at \$30+GST

With the flexibility of lithium ion battery power, the TnT Titan gives you greater versatility with your testing than ever before. The internal lithium ion battery comes with safety focused design and more capacity to run the tester for up to 3000 sets of tests on a single charge.

Designed and manufactured in Australia to meet stringent testing requirements - some of the tightest in the world - TnT Titan now sets its own new standard of reliability and ruggedness. Wavecom provide customer service and product support from here in Australia, and all our TnT Titan PAT Testers come with a 24 month conditional warranty.

# Models



**The TnT Titan**  
Handheld Portable Appliance Tester  
10 Amp Operation

**WCM-TNT-TITAN**



**The TnT Titan 20A**  
Handheld Portable Appliance Tester  
20 Amp Operation

**WCM-TNT-TITAN-20A**

# Specifications

Mains Supply Tests	Checks Polarity and continuity of mains supply by LED indicators (A-N, A-E, and N-E). (Flashing red LED indicates test fail)
Class I Tests- Earthed Appliance	Appliance Check: Ensures appliance is plugged in and turned on. Earth Bond Test: 200mA test current. Pass level Less than 1.0 $\Omega$ . Measurement: 0.01 $\Omega$ to 10 $\Omega$ . Insulation Test: 500VDC/250VDC. Pass level Greater than 1M $\Omega$ . Measurement: 0.1 $\Omega$ to 10M $\Omega$ . *See also: Leakage Test
Class II Tests - Double Insulated Appliance	Appliance Check: Ensures appliance is plugged in and turned on. Insulation Test: 500VDC/250VDC. Pass level greater than 1M $\Omega$ . Measurement: 0.1 $\Omega$ to 10M $\Omega$ . *See also: Leakage Test
Extension Lead Tests	Earth Bond Test: 200mA test current. Pass level Less than 1 $\Omega$ . Measurement: 0.01 $\Omega$ to 10.0 $\Omega$ s. Insulation Test: 500VDC/250VDC. Pass level Greater than 1M $\Omega$ . Measurement: 0.1 $\Omega$ to 10.0M $\Omega$ . Continuity/Polarity Test: 250VAC check continuity and polarity of leads. Displays Pass/Fail.
Meter Mode®	Green flashing LED denotes Meter Mode is engaged. Load Current: 0.0 to 10 Amps - Voltage: 200 to 265VAC - Apparent Power: 0 to 2400VA - Power: 0 to 2400W.
RCD Tests	Trip Current: 2 to 500mA in 1mA steps - User selectable. Trip Time: 0 to 3,000ms at .001sec resolution. Current Ramp Trip Test: 0 to 500mA in 1mA increments.
Leakage Tests	Leakage Current: 0 to 30.0mA at 200 to 265V. Earth Leakage Test: 240VAC Mains. Pass level 1, 2.5, 5.0 mA leakage test levels. Note 1: Pass level for CLASS 1 is 5 mA; pass level for CLASS 2 is 1 mA. Note 2: Leakage test may be performed if a standard CLASS 1 or CLASS 2 is not possible.
Power Measurement	Leakage Current: 0 to 30.0mA at 200 to 265V - Load Current: 0.0 to 10Amp (20Amp for TnP Prime 20A) Voltage: 200 to 265VAC - Power Factor: 0.00 to 1.00 - Apparent Power: 0 to 2400VA -Power 0 to 2400W.
Battery	4800MAH, 44WH, Charge Time Approximately 4 hours
Bluetooth	Bluetooth Low Energy technology with inbuilt antenna, with over 50 metre range.
Tablet	8 inch 800 x 1280 HD screen, 4G Android tablet with 5 megapixel rear camera and 2 megapixel front camera, 1.28Ghz Quad Core processor with Android Go and docking accessories



# The TnT Titan Kit

*Our All In One Kit For Portable Appliance Testing*



## Features

- ◇ All the features of the TnT Titan
- ◇ Android 4G-Ready Telstra Tablet
- ◇ Bluetooth Connectivity - Control your TnT Titan via the new WinPATS App
- ◇ 10 or 20 Amp Current Capacity
- ◇ Powered by a Lithium Ion Battery - Conduct over 3,000 sets of tests per charge
- ◇ Integrated Isolation Transformer for Portable RCD Testing
- ◇ Battery Powered, Bluetooth LE Thermal Transfer Tag Printer
- ◇ IP-67 Rated Heavy Duty Transit Case
- ◇ 24 Month conditional warranty and 12 month calibration certificate

The TnT Titan Kit features all the benefits of the TnT Titan with the added bonus of our latest Battery Powered Tag Printer with Bluetooth Connectivity. Conduct tests using the TnT Titan and print tags wirelessly, directly from the new WinPATS App. Contained in an IP-67 Rated heavy duty case, the TnT Titan Kit will make test and tagging easier than ever.

With the new WinPATS App you can now control your TnT Titan via Bluetooth. Using the included Telstra 4G-Ready Tablet you can conduct tests and get results straight to the palm of your hand. The TnT Titan Kit includes a voucher for 1 WinPATS App license valued at \$30+GST

With the flexibility of lithium ion battery power, the TnT Titan gives you greater versatility with your testing than ever before.

Included with the TnT Titan Kit is the new TT040-50BB battery powered Bluetooth printer. Featuring a lithium ion battery pack and Bluetooth LE technology, the TT040-50BB is capable of printing over 3,000 tags on a single charge, and the battery can be fully charged in 6-8 hours. This allows you to print test tags in all environments, even when mains power is not available. The TT040-50BB also connects wirelessly to our new WinPATS App. You can now print tags all from the palm of your hand.

Designed and manufactured in Australia to meet stringent testing requirements - some of the tightest in the world - TnT Titan now sets its own new standard of reliability and ruggedness. Wavecom provide customer service and product support from here in Australia, and all our TnT Titan PAT Testers come with a 24 month conditional warranty.



# Models



**The TnT Titan Kit**  
Handheld Portable Appliance Test Kit  
10 Amp Operation

**WCM-TNT-TITAN-KIT**



**The TnT Titan 20A Kit**  
Handheld Portable Appliance Test Kit  
20 Amp Operation

**WCM-TNT-TITAN-20A-KIT**

# Specifications

Mains Supply Tests	Checks Polarity and continuity of mains supply by LED indicators (A-N, A-E, and N-E). (Flashing red LED indicates test fail)
Class I Tests- Earthed Appliance	Appliance Check: Ensures appliance is plugged in and turned on. Earth Bond Test: 200mA test current. Pass level Less than 1.0 $\Omega$ . Measurement: 0.01 $\Omega$ to 10 $\Omega$ . Insulation Test: 500VDC/250VDC. Pass level Greater than 1M $\Omega$ . Measurement: 0.1 $\Omega$ to 10M $\Omega$ . <small>*See also: Leakage Test</small>
Class II Tests - Double Insulated Appliance	Appliance Check: Ensures appliance is plugged in and turned on. Insulation Test: 500VDC/250VDC. Pass level greater than 1M $\Omega$ . Measurement: 0.1 $\Omega$ to 10M $\Omega$ . <small>*See also: Leakage Test</small>
Extension Lead Tests	Earth Bond Test: 200mA test current. Pass level Less than 1 $\Omega$ . Measurement: 0.01 $\Omega$ to 10.0 $\Omega$ s. Insulation Test: 500VDC/250VDC. Pass level Greater than 1M $\Omega$ . Measurement: 0.1 $\Omega$ to 10.0M $\Omega$ . Continuity/Polarity Test: 250VAC check continuity and polarity of leads. Displays Pass/Fail.
Meter Mode®	Green flashing LED denotes Meter Mode is engaged. Load Current: 0.0 to 10 Amps - Voltage: 200 to 265VAC - Apparent Power: 0 to 2400VA - Power: 0 to 2400W.
RCD Tests	Trip Current: 2 to 500mA in 1mA steps - User selectable. Trip Time: 0 to 3,000ms at .001sec resolution. Current Ramp Trip Test: 0 to 500mA in 1mA increments.
Leakage Tests	Leakage Current: 0 to 30.0mA at 200 to 265V. Earth Leakage Test: 240VAC Mains. Pass level 1, 2.5, 5.0 mA leakage test levels. <small>Note 1: Pass level for CLASS 1 is 5 mA; pass level for CLASS 2 is 1 mA.</small> <small>Note 2: Leakage test may be performed if a standard CLASS 1 or CLASS 2 is not possible.</small>
Power Measurement	Leakage Current: 0 to 30.0mA at 200 to 265V - Load Current: 0.0 to 10Amp (20Amp for TnP Prime 20A) Voltage: 200 to 265VAC - Power Factor: 0.00 to 1.00 - Apparent Power: 0 to 2400VA -Power 0 to 2400W.
Battery	4800mAH, 44WH, Charge Time Approximately 4 hours
Bluetooth	Bluetooth Low Energy technology with inbuilt antenna, with over 50 metre range.
Tablet	8 inch 800 x 1280 HD screen, 4G Android tablet with 5 megapixel rear camera and 2 megapixel front camera, 1.28Ghz Quad Core processor with Android Go and docking accessories

# The TnT RCD

*Our Latest Portable Appliance Tester designed for RCD Testing*



## Features

- ◇ Class 1, Class 2, RCD, Leakage and Extension Lead Tests
- ◇ Simple Test Procedures and Easy To Read Results
- ◇ 10 or 20 Amp Current Capacity
- ◇ Powered by a Lithium Ion Battery - Conduct over 3,000 sets of tests per charge
- ◇ Integrated Isolation Transformer for Portable RCD Testing
- ◇ 24 Month conditional warranty and 12 month calibration certificate

The TnT RCD is the most affordable new Appliance Tester from Wavecom. Offering an easy to use Portable Appliance Testing system and a long lasting battery, the TnT RCD is the cutting edge in appliance testing technology.

The TnT RCD offers a full range of AS/NZS 3760:2010 tests, including Class 1, Class 2, Extension Lead, RCD and Leakage testing. Simple test procedures and LED indicators make testing a breeze.

The TnT RCD also features an integrated Isolation Transformer for testing Residual Current Devices (RCDs) that streamlines the RCD testing process.

With the flexibility of lithium ion battery power, the TnT RCD gives you greater versatility with your testing than ever before. The internal lithium ion battery comes with safety focused design and more capacity to run the tester for up to 3000 sets of tests on a single charge.

Designed and manufactured in Australia to meet stringent testing requirements - some of the tightest in the world - TnT RCD now sets its own new standard of reliability and ruggedness. Wavecom provide customer service and product support from here in Australia, and all our TnT RCD PAT Testers come with a 24 month conditional warranty.

# Models



**The TnT RCD**  
Handheld Portable Appliance Tester  
10 Amp Operation

**WCM-TNT-RCD**



**The TnT RCD 20A**  
Handheld Portable Appliance Tester  
20 Amp Operation

**WCM-TNT-RCD-20A**

# Specifications

Mains Supply Tests	Checks Polarity and continuity of mains supply by LED indicators (A-N, A-E, and N-E). (Flashing red LED indicates test fail)
Class I Tests- Earthed Appliance	Appliance Check: Ensures appliance is plugged in and turned on. Earth Bond Test: 200mA test current. Pass level Less than 1.0 $\Omega$ . Measurement: 0.01 $\Omega$ to 10 $\Omega$ . Insulation Test: 500VDC/250VDC. Pass level Greater than 1M $\Omega$ . Measurement: 0.1 $\Omega$ to 10M $\Omega$ . *See also: Leakage Test
Class II Tests - Double Insulated Appliance	Appliance Check: Ensures appliance is plugged in and turned on. Insulation Test: 500VDC/250VDC. Pass level greater than 1M $\Omega$ . Measurement: 0.1 $\Omega$ to 10M $\Omega$ . *See also: Leakage Test
Extension Lead Tests	Earth Bond Test: 200mA test current. Pass level Less than 1 $\Omega$ . Measurement: 0.01 $\Omega$ to 10.0 $\Omega$ s. Insulation Test: 500VDC/250VDC. Pass level Greater than 1M $\Omega$ . Measurement: 0.1 $\Omega$ to 10.0M $\Omega$ . Continuity/Polarity Test: 250VAC check continuity and polarity of leads. Displays Pass/Fail.
Meter Mode®	Green flashing LED denotes Meter Mode is engaged. Load Current: 0.0 to 10 Amps - Voltage: 200 to 265VAC - Apparent Power: 0 to 2400VA - Power: 0 to 2400W.
RCD Tests	Trip Current: 2 to 500mA in 1mA steps - User selectable. Trip Time: 0 to 3,000ms at .001sec resolution. Current Ramp Trip Test: 0 to 500mA in 1mA increments.
Leakage Tests	Leakage Current: 0 to 30.0mA at 200 to 265V. Earth Leakage Test: 240VAC Mains. Pass level 1, 2.5, 5.0 mA leakage test levels. Note 1: Pass level for CLASS 1 is 5 mA; pass level for CLASS 2 is 1 mA. Note 2: Leakage test may be performed if a standard CLASS 1 or CLASS 2 is not possible.
Power Measurement	Leakage Current: 0 to 30.0mA at 200 to 265V - Load Current: 0.0 to 10Amp (20Amp for TnP Prime 20A) Voltage: 200 to 265VAC - Power Factor: 0.00 to 1.00 - Apparent Power: 0 to 2400VA -Power 0 to 2400W.
Battery	4800mAh, 44WH, Charge Time Approximately 4 hours

# The Gen 4 PAT Testers

*Previous Generation Portable Appliance Testers*

## Features

- ◇ Class 1, Class 2, Extension Lead, Leakage, RCD and Power Tests
- ◇ Simple One Button Testing
- ◇ Easy to read screen
- ◇ Flashing LED Fail Indicator
- ◇ Specially formulated high impact resistant, flame retardant housing
- ◇ Conditional 24 month warranty
- ◇ Fully Australian designed & manufactured

## The TnP-500 Includes

- ◇ Integrated Thermal Transfer Printer
- ◇ Barcode Scanner
- ◇ Keyboard
- ◇ 5,000 item memory
- ◇ WinPATs Premium Software



Our previous generation of TnT appliance testers offer a reliable and affordable handheld appliance testing solution. Offering many of the features of the more advanced TnT Titan, the Gen 4 range is an excellent budget-friendly alternative.

The Gen 4 TnT Series boasts a comprehensive list of tests and analysis as required under our AS/ NZS 3760:2010 standards, including extension lead & earth leakage tests. The TnP-500 can also conduct trip time and ramp RCD tests.

The TnT-EL is our most affordable PAT testing option. Offering a simple test selection menu, straightforward test instructions and easy to read results, testing has never been quicker.

The TnP-500 streamlines your appliance testing operations like nothing before. With the integrated barcode scanner and tag printer testing is a breeze - simply enter the appliance's details using the keyboard, run the test, and the TnP-500 will print your tag with all the relevant information. When it's time to retest, simply scan the tag with the barcode scanner to retest. For high volume testing, you won't beat the TnP-500.

Designed and manufactured in Australia to meet stringent testing requirements - some of the tightest in the world - the Gen 4 series now sets its own new standard of reliability and ruggedness, which also comes with a 24 month conditional warranty.



# Models



**TnT-EL**

**Wavecom Handheld Appliance Tester**  
10 Amp Operation

**WCM-TNT-EL**



**TnP-500**

**Wavecom Portable Appliance Test & Print Kit**  
10 Amp Operation

**WCM-TNP-500**

# Specifications

Mains Supply Tests	Checks Polarity and continuity of mains supply by LED indicators (A-N, A-E, and N-E). (Flashing red LED indicates test fail)
Class I Tests- Earthed Appliance	Appliance Check: Ensures appliance is plugged in and turned on. Earth Bond Test: 200mA test current. Pass level Less than 1.0 $\Omega$ . Measurement: 0.01 $\Omega$ to 10 $\Omega$ . Insulation Test: 500VDC / 250VDC. Pass level Greater than 1M $\Omega$ . Measurement: 0.1 $\Omega$ to 10M $\Omega$ . <small>*See also Leakage Test</small>
Class II Tests - Double Insulated Appliance	Appliance Check: Ensures appliance is plugged in and turned on. Insulation Test: 500VDC / 250VDC. Pass level greater than 1M $\Omega$ . Measurement: 0.1 $\Omega$ to 10M $\Omega$ . <small>*See also Leakage Test</small>
Extension Lead Tests	Earth Bond Test: 200mA test current. Pass level Less than 1 $\Omega$ . Measurement: 0.01 $\Omega$ to 10.0 $\Omega$ Insulation Test: 500VDC / 250VDC. Pass level Greater than 1M $\Omega$ . Measurement: 0.1 $\Omega$ to 10.0M $\Omega$ . Continuity/Polarity Test: 250VAC check continuity and polarity of leads. Displays Pass/Fail
Power Measurement	Leakage Current: 0 to 30.0mA at 200 to 265V - Load Current: 0.0 to 10Amp (20Amp for TnP-500X) Voltage: 200 to 265VAC - Power Factor: 0.00 to 1.00 - Apparent Power: 0 to 2400VA -Power 0 to 2400W
Meter Mode®	Green flashing LED denotes Meter Mode is engaged - Load Current: 0.0 to 10Amp - Voltage: 200 to 265VAC Apparent Power: 0 to 2400VA - Power: 0 to 2400W
RCD Tests	Trip Current: 2 to 500mA in 1mA steps - <i>User selectable</i> . - Trip Time: 0 to 3,000ms at .001sec resolution. Current Ramp Trip Test: 0 to 500mA in 1mA increments.
Leakage Tests	Leakage Current: 0 to 30.0mA at 200 to 265V Earth Leakage Test: 240VAC Mains. Pass level 1, 2.5, 5.0 mA leakage test levels <small>Note 1: Pass level for CLASS 1 is 5 mA; pass level for CLASS 2 is 1 mA</small> <small>Note 2: Leakage test may be performed if a standard CLASS 1 or CLASS 2 is not possible</small>
Memory <small>TnP-500 Only:</small>	5000 Items - 20,000 item upgrade optional

# The 3PL Lite

*Our most affordable 3 Phase Appliance Tester*



## Features

- ◇ Class 1, Class 2, RCD, Leakage and Extension Lead Tests
- ◇ Android 4G-Ready Telstra Tablet
- ◇ Bluetooth Connectivity - Control your 3PL via the new WinPATS App
- ◇ 20 Amp Load Current Capacity
- ◇ Powered by a Lithium Ion Battery - Conduct over 3,000 sets of tests per charge
- ◇ Built in Isolation Transformer for RCD Testing
- ◇ 6700mAh Lithium Ion Battery that can power over 3,000 sets of tests per charge
- ◇ Data Connectivity to PCs and Tablets via Micro USB
- ◇ A 24 month conditional warranty and 12 month calibration certificate

The 3PL Lite is part of the latest generation of 3 Phase Appliance Tester from Wavecom. Offering a more affordable 3 Phase PAT Testing option, the 3PL Lite integrates seamlessly with the new WinPATS App via Bluetooth. With cutting edge features and a solution for every budget, the 3PL Lite is the cutting edge in 3 phase appliance testing technology.

The 3PL Lite series offers a full range of AS/NZS 3760:2010 tests, including Class 1, Class 2, Extension Lead, RCD and Leakage testing. Simple test procedures, LED indicators and the integrated tag printer make high volume testing a breeze.

With the new WinPATS App you can now control your 3PL Lite via Bluetooth. Using the included Telstra 4G-Ready Tablet you can conduct tests, print tags and get results straight to the palm of your hand. The PAT tester will send test results straight to WinPATS and at the tap of a button your data is backed up to a secure web server provided by AWS. Every Wavecom 3 Phase

Tester includes a voucher for 1 WinPATS App license valued at \$30+GST.

With the TnP 3PL Lite you'll never have to hand write another test tag again. The integrated thermal transfer printer prints clear, easy to read tags that last. Our tags are tested to ensure that your test results, barcode and logo don't fade over time. Use the included Bluetooth laser scanner to scan barcodes and access your test results, item information and test due dates with the new WinPATS App.

Featuring a telescoping handle and luggage wheels in addition to the usual carry handle, the 3PL series is easier than ever to transport. The heavy duty transit case is manufactured from ultra high impact engineer structural material. Offering IP67 rated dust and water protection, as well as shock resistance to bumps and falls, the 3PL Lite can handle even the toughest work site.



# Models



**The TnT 3PL Lite**  
3 Phase Portable Appliance Tester  
20 Amp Operation

**WCM-TNT-3PL-LITE**



**The TnP 3PL Lite**  
3 Phase Portable Appliance Tester  
with Integrated Tag Printer  
20 Amp Operation

**WCM-TNP-3PL-LITE**

# Specifications

Mains Supply Tests	Checks Polarity and continuity of mains supply by LED indicators (A-N, A-E, and N-E). (Flashing red LED indicates test fail)
Class I Tests Earthed Appliance	Appliance Check: Ensures appliance is plugged in and turned on. Earth Bond Test: 200mA test current. Pass level Less than 1.0 $\Omega$ . Measurement: 0.01 $\Omega$ to 10 $\Omega$ . Insulation Test: 500VDC / 250VDC. Pass level Greater than 1M $\Omega$ . Measurement: 0.1 $\Omega$ to 10M $\Omega$ . *See also: Leakage Test
Class II Tests Double Insulated Appliance	Appliance Check: Ensures appliance is plugged in and turned on. Insulation Test: 500VDC / 250VDC. Pass level greater than 1M $\Omega$ . Measurement: 0.1 $\Omega$ to 10M $\Omega$ . *See also: Leakage Test
Extension Lead Tests	Earth Bond Test: 200mA test current. Pass level Less than 1 $\Omega$ . Measurement: 0.01 $\Omega$ to 10.0 $\Omega$ s. Insulation Test: 500VDC / 250VDC. Pass level Greater than 1M $\Omega$ . Measurement: 0.1 $\Omega$ to 10.0M $\Omega$ . Continuity/Polarity Test: 250VAC check continuity and polarity of leads. Displays Pass/Fail.
Power Measurement	Leakage Current: 0 to 30.0mA at 200 to 265V - Load Current: 0.0 to 20A Voltage: 200 to 265VAC - Power Factor: 0.00 to 1.00 - Apparent Power: 0 to 2400VA -Power 0 to 2400W.
Meter Mode®	Green flashing LED denotes Meter Mode is engaged. Load Current: 0.0 to 10 Amps - Voltage: 200 to 265VAC - Apparent Power: 0 to 2400VA - Power: 0 to 2400W.
RCD Tests	Trip Current: 2 to 500mA in 1mA steps - User selectable. Trip Time: 0 to 3,000ms at .001sec resolution. Current Ramp Trip Test: 0 to 500mA in 1mA increments.
Leakage Tests	Leakage Current: 0 to 30.0mA at 200 to 265V. Earth Leakage Test: 240VAC Mains. Pass level 1, 2.5, 5.0 mA leakage test levels. Note 1: Pass level for CLASS 1 is 5 mA; pass level for CLASS 2 is 1 mA. Note 2: Leakage test may be performed if a standard CLASS 1 or CLASS 2 is not possible.
Memory	5000 Items Local Storage, virtually unlimited Cloud Storage with the new WinPATS App.
Battery	6700 mAh, 98WH, Charge Time Around 4 Hour
Bluetooth	Bluetooth Low Energy technology with inbuilt antenna, with over 50 metre range.
Tablet	8 inch 800 x 1280 HD screen, 4G Android tablet with 5 megapixel rear camera and 2 megapixel front camera, 1.28Ghz Quad Core processor with Android Go and docking accessories

# The TnP 3PLM

*Our Most Advanced Three Phase Tester*



## Features

- ◇ Class 1, Class 2, RCD, Leakage and Extension Lead Tests
- ◇ 25A Earth Bond Tests and 1000V Insulation Tests
- ◇ Android 4G-Ready Telstra Tablet
- ◇ Bluetooth Connectivity - Control your 3PL via the new WinPATS App
- ◇ 20, 32 and 50 Amp Load Current Capacity Options
- ◇ Powered by a Lithium Ion Battery - Conduct over 3,000 sets of tests per charge
- ◇ Built in Isolation Transformer for RCD Testing
- ◇ 6700mAH Lithium Ion Battery that can power over 3,000 sets of tests per charge
- ◇ Data Connectivity to PCs and Tablets via Micro USB
- ◇ A 24 month conditional warranty and 12 month calibration certificate

The TnP 3PLM is our latest and greatest 3 Phase Appliance Tester from Wavecom. Offering an advanced testing and printing system with , the 3PL Lite integrates seamlessly with the new WinPATS App via Bluetooth. With cutting edge features and a solution for every budget, the 3PL Lite is the cutting edge in 3 phase appliance testing technology.

The TnP 3PLM offers a full range of AS/NZS 3760:2010 tests, including Class 1, Class 2, Extension Lead, RCD and Leakage testing, as well as 25A Earth Bond and 1000V insulation tests. Simple test procedures, LED indicators and the integrated tag printer make high volume testing a breeze.

With the new WinPATS App you can now control your TnP 3PLM via Bluetooth. Using the included Telstra 4G-Ready Tablet you can conduct tests, print tags and get results straight to the palm of your hand. The PAT tester will send test results straight to WinPATS and at the tap of a button your data is backed up to a secure

web server provided by AWS. Every Wavecom 3 Phase Tester includes a voucher for 1 WinPATS App license valued at \$30+GST.

With the TnP 3PLM you'll never have to hand write another test tag again. The integrated thermal transfer printer prints clear, easy to read tags that last. Our tags are tested to ensure that your test results, barcode and logo don't fade over time. Use the included Bluetooth laser scanner to scan barcodes and access your test results, item information and test due dates with the new WinPATS App.

Featuring a telescoping handle and luggage wheels in addition to the usual carry handle, the 3PL series is easier than ever to transport. The heavy duty transit case is manufactured from ultra high impact engineer structural material. Offering IP67 rated dust and water protection, as well as shock resistance to bumps and falls, the TnP 3PLM can handle even the toughest work site.

# Models



**The TnP 3PLM 20A**  
20 Amp Operation

**WCM-TNP-3PLM-20A**



**The TnP 3PLM 32A**  
32 Amp Operation

**WCM-TNP-3PLM-32A**



**The TnP 3PLM 50A**  
50 Amp Operation

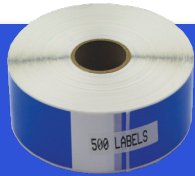
**WCM-TNP-3PLM-50A**

# Specifications

Mains Supply Tests	Checks Polarity and continuity of mains supply by LED indicators (A-N, A-E, and N-E). (Flashing red LED indicates test fail)
Class I Tests Earthed Appliance	Appliance Check: Ensures appliance is plugged in and turned on. Earth Bond Test: 200mA test current. Pass level Less than 1.0 $\Omega$ . Measurement: 0.01 $\Omega$ to 10 $\Omega$ . Insulation Test: 1000VDC / 500VDC / 250VDC. Pass level Greater than 1M $\Omega$ . Measurement: 0.1 $\Omega$ to 10M $\Omega$ . *See also: Leakage Test
Class II Tests Double Insulated Appliance	Appliance Check: Ensures appliance is plugged in and turned on. Insulation Test: 1000V DC/ 500VDC / 250VDC. Pass level greater than 1M $\Omega$ . Measurement: 0.1 $\Omega$ to 10M $\Omega$ . *See also: Leakage Test
Extension Lead Tests	Earth Bond Test: 200mA test current. Pass level Less than 1 $\Omega$ . Measurement: 0.01 $\Omega$ to 10.0 $\Omega$ s. Insulation Test: 1000VDC / 500VDC / 250VDC. Pass level Greater than 1M $\Omega$ . Measurement: 0.1 $\Omega$ to 10.0M $\Omega$ . Continuity/Polarity Test: 250VAC check continuity and polarity of leads. Displays Pass/Fail.
Power Measurement	Leakage Current: 0 to 30.0mA at 200 to 265V - Load Current: 0.0 to 20A (32A for the TnP 3PLM 32A, 50A for the TnP 3PLM 50A) Voltage: 200 to 265VAC - Power Factor: 0.00 to 1.00 - Apparent Power: 0 to 2400VA -Power 0 to 2400W.
Meter Mode®	Green flashing LED denotes Meter Mode is engaged. Load Current: 0.0 to 10 Amps - Voltage: 200 to 265VAC - Apparent Power: 0 to 2400VA - Power: 0 to 2400W.
RCD Tests	Trip Current: 2 to 500mA in 1mA steps - User selectable. Trip Time: 0 to 3,000ms at .001sec resolution. Current Ramp Trip Test: 0 to 500mA in 1mA increments.
Leakage Tests	Leakage Current: 0 to 30.0mA at 200 to 265V. Earth Leakage Test: 240VAC Mains. Pass level 1, 2.5, 5.0 mA leakage test levels. Note 1: Pass level for CLASS 1 is 5 mA; pass level for CLASS 2 is 1 mA. Note 2: Leakage test may be performed if a standard CLASS 1 or CLASS 2 is not possible.
Memory	5000 Items Local Storage, virtually unlimited Cloud Storage with the new WinPATS App.
Battery	6700 mAh, 98WH, Charge Time Around 4 Hour
Bluetooth	Bluetooth Low Energy technology with inbuilt antenna, with over 50 metre range.
Tablet	8 inch 800 x 1280 HD screen, 4G Android tablet with 5 megapixel rear camera and 2 megapixel front camera, 1.28Ghz Quad Core processor with Android Go and docking accessories

# Printable Tags

Please note: When ordering printable tags and media, please specify which colour(s) you require by putting the relevant letter at the end of the code - ie. For blue tags, use 'WCM-TAG-B'



**WCM-TAG-\***  
**WCM-UV-TAG-\***

## Printable Tags

Our range of Printable Test Tags are available in standard and UV-resistant varieties. Specially designed for tag printing with our TnP-500 units, these tags are durable and reliable.

100mm x 40mm - 500 Tags/Roll (UV Resistant: 400 Tags/Roll)

Colours:

Blue (B) - Burgundy (BUR) - Green (G) - Orange (O)  
Pink (P - Standard Tags Only) - Red (R) - White (W) - Yellow (Y)



**WCM-RIBBON**  
**WCM-UV-RIBBON**

## Printing Ribbon

Our full resin ribbons will ensure very high bonding properties when printing with Wavecom tags. Specifically chosen to provide clear prints and scratch resistance, your tags will be sure to last.

Each roll (Standard and UV) prints approximately 650 tags



**WCM-TAGSC-\***  
**WCM-UV-TAGSC-\***

## Small Combo Pack

Our Small Combo Pack contains Printable Tags and Printing Ribbon, at a great discounted rate. Perfect for large scale testing.

Standard: 5 Rolls of Tags + 4 Rolls of Ribbon (2,500 Tags Total)

UV Resistant: 5 Rolls of Tags + 3 Rolls of Ribbon (2,000 Tags Total)

One Colour Per Pack - Colours:

Blue (B) - Burgundy (BUR) - Green (G) - Orange (O)  
Pink (P - Standard Tags Only) - Red (R) - White (W) - Yellow (Y)



**WCM-TAGLC-\***  
**WCM-UV-TAGLC-\***

## Large Combo Pack

Our Large Combo Pack contains Printable Tags and Printing Ribbon, at a massively discounted rate. Our best value option.

Standard: 12 Rolls of Tags + 9 Rolls of Ribbon (6,000 Tags Total)

UV Resistant: 12 Rolls of Tags + 8 Rolls of Ribbon (4,800 Tags Total)

One Colour Per Pack - Colours:

Blue (B) - Burgundy (BUR) - Green (G) - Orange (O)  
Pink (P - Standard Tags Only) - Red (R) - White (W) - Yellow (Y)



**WCM-TAG-ALL Clear-LAM**

## Clear Laminated Tag Overlays

For use with Wavecom Printable Tags, these clear laminated overlays provide extra protection from the elements, as well as making the tag itself stronger and more rigid.

1000 Overlays per Roll

# Appliance Test Tags

Please note: When ordering appliance test tags, please specify which colour(s) you require by putting the relevant letter at the end of the code - ie. for blue ATT Tags, use 'WCM-ATT-Tags-B'



WCM-ATT-Tags-\*

## ATT Tags

ATT tags are a medium-duty appliance test tag, ideal for indoor environments such as offices and factories. ATT Tags are laminated to provide a long lasting tag that won't fade over time.

250 Tags per Roll

Colours:

Black (BLK) - Blue (B) - Burgundy (BUR) - Green (GN)  
Orange (O) - Red (R) - Yellow (Y) - White (W)



WCM-TT-Tags-\*

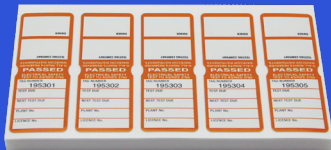
## TT Tags

TT Tags are a medium-duty tag, suitable for most indoor and outdoor applications that don't require specialised protection and are self-laminating to protect your tag from the elements.

100 Tags per pack with pen included

Colours:

Black (BLK) - Blue (B) - Burgundy (BUR) - Green (GN)  
Orange (O) - Red (R) - White (W) - Yellow (Y) - Rainbow (RAIN)



WCM-TM-Tags-\*

## TM Tags

TM Tags are a heavy duty tag, suited to all but the harshest conditions. Featuring one of the strongest self-adhesives available, these tags are ideal for construction sites and factories.

100 Tags per pack with pen included

Colours:

Black (BLK) - Blue (B) - Burgundy (BUR) - Green (GN)  
Orange (O) - Red (R) - White (W) - Yellow (Y) - Rainbow (RAIN)



WCM-TA-Tags-\*

## TA Tags

Our strongest tag on offer, TA Tags are a super-heavy duty test tag, specially formulated for use in heavy industrial and mining environments.

100 Tags per pack with pen included

Colours:

Black (BLK) - Blue (B) - Burgundy (BUR) - Green (GN) - Grey (G)  
Orange (O) - Red (R) - White (W) - Yellow (Y)



# Customisable Tags

We also offer a tag customisation service for our Appliance Test Tags - we offer pre-printed customisation on our ATT, TT and TM Tag ranges. Tag designs can feature your logo, business name, contact details, license details, technician names and more.

ATT Tags can be printed only in black and white using thermal transfer printing, while TT and TM Tags can be printed in full colour, making them a great option for advertising your test and tag services.

To customise your tags, contact [office@wavecom.com.au](mailto:office@wavecom.com.au) once your order is confirmed. Please include any images and information you'd like on your tag in this email. Our staff will create your tag design, and send you an approval form. After signing off on the design, your tags will be printed.



WCM-ATT-Tags-\*

## ATT Tags

ATT tags are our basic appliance test tag, ideal for indoor environments. ATT Tags can be printed in black and white only.

250 Tags per Roll

Colours:

Black (BLK) - Blue (B) - Burgundy (BUR) - Green (GN)  
Orange (O) - Red (R) - Yellow (Y)



WCM-TT-Tags-\*

## TT Tags

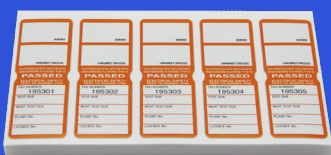
TT Tags are a medium-duty tag, suitable for most indoor and outdoor applications that don't require specialised protection.

TT Tags can be printed in full colour.

100 Tags per pack with pen included

Colours:

Black (BLK) - Blue (B) - Burgundy (BUR) - Green (GN)  
Orange (O) - Red (R) - White (W) - Yellow (Y) - Rainbow (RAIN)



WCM-TM-Tags-\*

## TM Tags

TM Tags are a heavy duty tag, suited to all but the harshest conditions. TM Tags can be printed in full colour.

100 Tags per pack with pen included

Colours:

Black (BLK) - Blue (B) - Burgundy (BUR) - Green (GN)  
Orange (O) - Red (R) - White (W) - Yellow (Y) - Rainbow (RAIN)



# Specific Purpose Tags



WCM-NTS-Tags

## New To Service Tags

For appliances that have been introduced into service and will require test and tagging in the future.

*100 Tags per Pack*

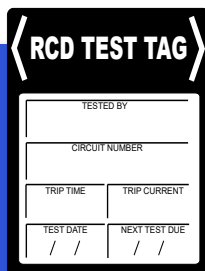


WCM-OTS-Tags

## Out of Service - Danger Tags

For appliances that have failed a test and should not be used in the future until the fault is fixed.

*100 Tags per Pack*



WCM-RCD-Tags

## RCD Tags

For tagging Residual Current Devices - for use with Appliance Testers with RCD testing capabilities, or dedicated RCD Testers

*100 Tags per Pack*



WCM-MICRO-Tags

## Microwave Tags

For tagging any appliance tested for microwave leakage, such as household microwave ovens.

*100 Tags per Pack*

# Waterproof Warning Tags



WCM-SD T100

## Wavecom Danger Tags

### Features

- ◇ Waterproof Lightweight Tag
- ◇ Cheap and Effective
- ◇ Held in place with brass eyelet and string
- ◇ 100 Tags per pack



WCM-SD T50

## Wavecom Out of Service Tags

### Features

- ◇ Waterproof Lightweight Tag
- ◇ Cheap and Effective
- ◇ Held in place with brass eyelet and string
- ◇ 100 Tags per pack



WCM-SD T106

## Wavecom Information Tags

### Features

- ◇ Waterproof Lightweight Tag
- ◇ Cheap and Effective
- ◇ Held in place with brass eyelet and string
- ◇ 100 Tags per pack

# Electrical Safety Kits



**WCM-CLK-1 Kit**

## Wavecom Lockout Kit

### Contents

- |   |  |                                   |
|---|--|-----------------------------------|
| ◇ 1 x Carry Bag   | ◇ 1 x Lockout for Fuse Holders           | ◇ 1 x Safety Lockout Padlock      |
| ◇ 2 x Universal Lockout for Miniature Circuit Breakers    | ◇ 1 x Multifunction Cable Lockout Device | ◇ 4 x Danger Tags                 |
| ◇ 1 x Universal Lockout for Moulded Case Circuit Breakers | ◇ 1 x Stainless Steel Lockout Hasp       | ◇ 2 x Out of Service Tags         |
|   |  | ◇ Pen, Screwdriver and Cable Ties |



**WCM-Rescue Kit**

## Wavecom Switchboard Rescue Kit

### Contents

- |                           |  |
|---------------------------|--|
| ◇ Fire Blanket            | ◇ 1000V Rescue Crook                               |
| ◇ Trauma Dressing         | ◇ Weatherproof Torch                               |
| ◇ Isolation Tag           | ◇ Contained in a Durable, Bright Orange Carry Case |
| ◇ 1000V Insulating Gloves |  |

### About

This Rescue kit is designed for rescue operations in live current situations. Essential for anyone working around live currents.

# The New WinPATS App

## *The Most Advanced Appliance Testing App Yet!*

WinPATS is the latest Portable Appliance Testing app from Wavecom Instruments. Offering an integrated testing, management and reporting environment, designed specifically to link seamlessly between your tester, your tablet and online cloud storage, WinPATS is going to revolutionise the way you run your PAT Testing business.

With a WinPATS Cloud Plan, you can sync your WinPATS databases over 4G or Wifi. Ensure that everyone in your team has the most up to date schedules, data and test results whenever and wherever they need it - plus enjoy the security of knowing your data is backed up.

The new WinPATS App also features:

- Control your compatible Wavecom PAT Tester directly from your device via Bluetooth
- Simple Test Procedures
- Print tags with compatible printers
- Barcode scanning using your device's camera
- Report generation - create a range of reports at the tap of a button
- Site allocation and scheduling
- Job Safety Analysis generation and management
- Multiple user support with permission controls

## *WinPATS Versions and Pricing*



<b>Price:</b>	Price \$60, One Off per Tablet per Company All new WinPATS App compatible testers come with a \$60 voucher for WinPATS
<b>Devices:</b>	Android Tablets - Best suited to 8-inch tablets
<b>Features:</b>	5,000 Item Database Up to 100 Customers and 200 Sites Simple Report Generation with 5 Report Options 7 Year History for Every Item in Database

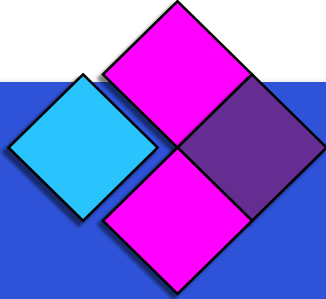
## *Company-Wide Online Support Plans*

<i>Lite Cloud Plan</i>	<i>Base Cloud Plan</i>	<i>Professional Cloud Plan</i>	<i>Ultimate Cloud Plan</i>
<b>Price:</b> \$60/year per Company Charged Annually in Advance	<b>Price:</b> \$180/year per Company Charged Annually in Advance	<b>Price:</b> \$420/year per Company Charged Annually in Advance	<b>Price:</b> \$900/year per Company Charged Annually in Advance
<b>Features:</b> 5,000 Item Cloud Database Up to 100 Customers & 200 Sites Up to 5 Users	<b>Features:</b> 20,000 Item Cloud Database Up to 200 Customers & 300 Sites Up to 10 Users	<b>Features:</b> 50,000 Item Cloud Database Up to 300 Customers & 500 Sites Up to 20 Users	<b>Features:</b> 100,000 Item Cloud Database Up to 500 Customers & 1,000 Sites Up to 40 Users

**Visit [winpats.app](http://winpats.app) to learn more!**

1. Subscription fees may apply subject to Fair Usage Policy.
2. Bluetooth connection can be established over distances of up to 200m in ideal conditions, and 50m reliably in all conditions

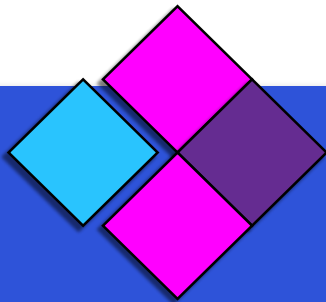
# Older WinPATS Versions



WCM-WinPATS Base

## WinPATS Base Version (for Windows)

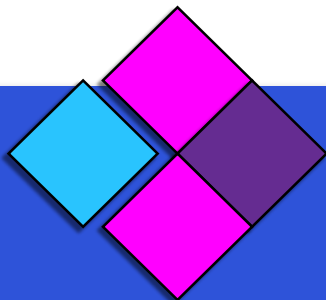
Ideal for single technicians or smaller, in house operations. WinPATS Base offers almost all the features of the higher tier products, such as TnT & TnP-500 integration, but is limited to 1 database of 1,000 items, with some report options unavailable.



WCM-WinPATS Premium

## WinPATS Premium Version (for Windows)

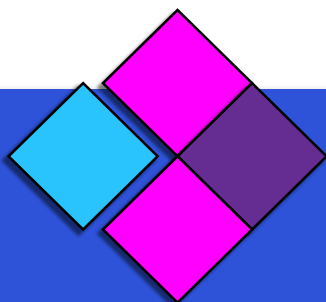
WinPATS Premium is the flagship version of WinPATS - offering totally unlimited access to all WinPATS features, and no limit to the number of databases and items you can manage. WinPATS Premium is more suited to larger testing operations with multiple sites and clients.



WCM-WinPATS LogBOOK

## WinPATS LogBOOK Version (for Windows)

WinPATS LogBOOK is a great solution for technicians who don't have a TnT Tester with data connectivity, or for use with other electrical equipment. Offering the same functionality as other WinPATS versions, without tester integration, LogBOOK is a more affordable option for asset management software.



WCM-WinPATS Support

## WinPATS Extended Support Plan

12 Month Support Package for WinPATS, offering over the phone and email support and troubleshooting. Users with WinPATS Extended Support are also eligible for any updates or upgrades made available during their 12 month plan.

# Tester Accessories



**WCM-TT040-50BB**

## Wavecom Thermal Transfer Printer

The TT040-50BB features a lithium ion battery pack and Bluetooth LE technology. The TT040-50BB can print over 3,000 tags on a single charge, and can be fully charged in as little as 4 hours. This allows you to print test tags in all environments, even when mains power is not available. The TT040-50BB also connects wirelessly to our new WinPATS App. You can now print tags all from the palm of your hand. These additions make the TT040-50BB the most advanced PAT testing tag printer on the market today, and is specially designed to integrate with our latest Portable Appliance Tester, the TnT Titan.



**WCM-Printer/Cable**

## Printer Serial Cable

Serial Cable for Connecting your Wavecom Appliance Tester to your Thermal Transfer Printer.



**WCM-Keyboard**

## Wavecom Keyboard

Mini Keyboard - Small form factor and lightweight yet sturdy design make it perfect for travelling.

(286mm L x 136mm W x 17mm H)



**WCM-Scanner**

## Wavecom Barcode Scanner

Provides fast, reliable scanning in a durable, lightweight form.

Barcode scanner for PC/Laptop (USB) - Used with TnT Scanner - Requires Y Lead & programming.



**WCM-YLead**

## Y Splitter Cable for Barcode Scanner

Dual Connection Cable for using Barcode Scanner with TnT Testers.



# Tester Accessories



**WCM-HTC-L**

## Heavy Duty Carry Case - Large

Our carry cases are watertight, dust proof, vibration proof and chemical resistant - perfect for keeping your equipment safe.

Dimensions: 430mm W x 380mm L x 154mm H

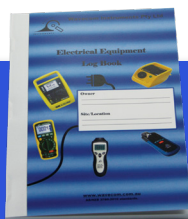


**WCM-ISOT**

## Wavecom Isolation Transformer

Ensures switchboard RCD won't trip while conducting RCD Tests.

240V AC @ 100mA max - for RCD Testing Only



**WCM-Log-Book**

## Test and Tag Log Book

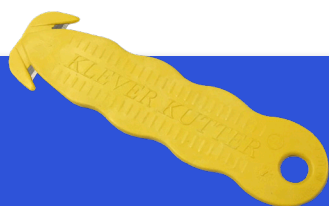
Specially designed note book for keeping records of test and tag operations, as required under AS/NZS 3760:2010 standards.



**WCM-RCD-Log-Book**

## RCD Log Book

Specially designed note book for keeping records of test and tag operations, as required under AS/NZS 3760:2010 standards.



**WCM-Tag-Kutter**

## Tag Remover

Removes tags from power cables without the risk of damaging the cable - makes removing old tags quick and easy.

# Tester Accessories



**WCM-TNT-PWRLD**

## **Power Lead - 10A**

Black Power Lead for Wavecom Appliance Testers with locking mechanism to ensure power supply.



**WCM-TNT-PWRLD-20**

## **Locking Power Lead - 20A**

Black Power Lead for Wavecom Appliance Testers with locking mechanism to ensure power supply.



**WCM-IEC2010**

## **IEC 20/10 Adaptor Lead**

IEC 20 Amp to 10 Amp Adaptor Lead with locking mechanism to ensure power supply.



**WCM-8-ADPT**

## **Figure 8 IEC Adaptor**

Ideal for testing laptop computer power leads and similar devices.  
IEC-C13 Female to IEC-C8 Male (2 Pin Figure 8)



**WCM-CLOVER-ADPT**

## **Cloverleaf IEC Adaptor**

Ideal for testing laptop computer power leads and similar devices.  
IEC-C13 Female to IEC-C6 Male (3 Pin Cloverleaf)

# Tester Accessories



WCM-IEC-20E

## Alligator Earth Bond Test Lead

IEC-C13 to Alligator Clip Lead for Earth Bond Tests



WCM-IEC550

## IEC Extension Lead

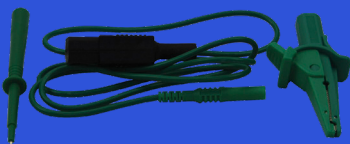
550mm IEC-C13 to IEC Type 1 Adaptor for Extension Lead Testing



WCM-IEC-Lead-Set

## Lead Set Pack

Lead set contains: Alligator Test Lead and IEC Extension Lead



WCM-Probe-Kit

## Test Probe Kit

Silicon Earth Leads with Interchangeable Probes & Alligator Clips



WCM-RCD-Test-Leadset

## RCD Test Lead Set

RCD Lead Set for Direction Switchboard RCD Testing.  
CAT III 1000V & CAT IV 600V Rated - 3 Probe Leads, 3 Alligator Clips & 1.5m lead.

# Tester Accessories



**WCM-3PHASE**

## Three Phase Adaptor

IEC Type 1 Plug to Five Pin Socket for Testing 3 Phase Devices



**WCM-3PH-MADP**

## Three Phase Multi-Adaptor

IEC Type 1 Plug to 2x Five Pin Socket Multi-Adaptor



**WCM-3PH-MADP-SW**

## Three Phase Multi-Adaptor with Switch

IEC Type 1 Plug to 2x Five Pin Socket Multi-Adaptor with Switch Selector



**WCM-T3PH42L**

## Three Phase Four Pin 20A Mains Supply Lead

IP66 Four Pin Plug for TnT-3PLM & TnP-3PLM Testers



**WCM-T3PH52L**

## Three Phase Five Pin 20A Mains Supply Lead

IP66 Five Pin Plug for TnT-3PLM & TnP-3PLM Testers

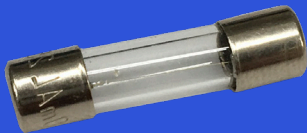
# Tester Accessories



WCM-App-Fuse-M205-10Amp

## Appliance Tester Fuse

M205 10Amp Ceramic 240v fuse for Wavecom Appliance Testers



WCM-Iso-Fuse-M205-500mA

## Isolation Transformer Fuse

M205 500mA Glass 240V fuse for Wavecom Isolation Transformers



WCM-TnT-ES-500

## Mesh Tinned Copper Braid - 500mm

Mesh-Tinned Copper Braid for Double Insulated Testing



WCM-TnT-ES-X

## Mesh Tinned Copper Braid - 1,000mm

Mesh-Tinned Copper Braid for Double Insulated Testing



# Meter Case



## Wavecom's New 3 in 1 Meter Case

The new Meter Case from Wavecom comes with a True RMS Clamp Meter, True RMS Digital Multimeter and an Analogue Insulation Tester, for a broad range of testing operations. Our heavy duty transit case is water tight, vibration proof, dust proof and chemical resistant, so wherever you go, Wavecom's Three in One Meter Case can go with you.



### Analogue Insulation Tester

- 250/500/1000V DC
- Displays AC mains voltage
- Low ohms, 500Ω and 3Ω range
- 1mA test current on insulation test of nominal voltage
- 205mA continuity short circuit
- On line battery display
- Live circuit warning indication
- Includes High Quality Lead Set and Calibration Certificate



### True RMS Clamp Meter

- 400A/1000A AC/DC
- 400V/1000V AC/DC
- True RMS Measurement
- Auto-ranging for voltage, current and resistance
- 400mm Ø conductor size
- Data hold
- Continuity Test
- Factory Calibration Certificate supplied



### True RMS Multimeter

- True RMS Measurement
- 6000 counts
- High-Res LCD Display with bar graph and backlight
- IP67 dust and waterproof
- 1000V Input Protection on all ranges
- Auto-Power Off
- Data hold/min max recording
- Temperature Function

# RCD Testers



**WCM-RCD**

## Digital RCD Tester

### Features

- ◊ Digital voltage reading line to earth
- ◊ Over temperature protection
- ◊ Mains supply test
- ◊ Auto power off
- ◊ RCD time trip test
- ◊ RCD ramp current test 10 - 650mA
- ◊ 0 and 180 degree phase testing
- ◊ Microprocessor controlled for highest accuracy & reliability
- ◊ 12 month warranty
- ◊ 12 month calibration certificate
- ◊ AS/NZ 3760 : 2010 compliant
- ◊ Delayed function test
- ◊ Display change to Red for failed test



**WCM-RCD Test Kit**

## RCD Test Kit

### Contents

- ◊ Digital RCD Tester
- ◊ Isolation Transformer
- ◊ CAT III & CAT IV compliant Test Leads and Clips
- ◊ Deluxe Rugged Carry Case

The RCD Test Kit is our best value for money testing kit. Ideal for testing both portable RCDs, as well as RCDs straight from the switchboard, this kit is perfect for highly accurate and reliable RCD testing.



**WCM-1813EL**

## Digital RCD Tester

### Features

- ◊ Microprocessor Controlled
- ◊ 2 Lines x 16 Character Display
- ◊ Menu Driven
- ◊ Auto data hold function
- ◊ 0° and 180 ° degree phase testing
- ◊ Mains Supply test
- ◊ Polarity trip indicator (positive or negative phase)
- ◊ Digital Voltage reading line to earth
- ◊ RCD ramp current test



**WCM-TEL1-4-240V**

## Earth Leakage & Wiring Tester

### Features

- ◊ Dual Function Test Instrument
- ◊ Verify Electrical Wiring Connections
- ◊ Test Earth Leakage Detectors & RCD Devices
- ◊ CAT III 240VAC Rated
- ◊ 10mA to 35 mA Range
- ◊ Handy Pocket Size & Tough Casing
- ◊ Ideal for Electricians

# Digital Multimeters



**WCM-89**

## Wavecom 89 Digital Multimeter

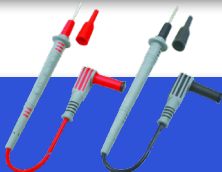
- ◇ True RMS measurement
- ◇ 6000 count high resolution display
- ◇ Backlit LCD display w/ bar graph
- ◇ Data Hold/Max Min recording mode
- ◇ IP67 dust and waterproof
- ◇ Auto power off
- ◇ 1000V input protection on all ranges
- ◇ Analogue bar graph/segment
- ◇ Relative mode
- ◇ Temperature function
- ◇ Wide capacitance range



**WCM-98**

## Wavecom 98 Digital Multimeter

- ◇ Wavecom multimeter with 40000 count high resolution
- ◇ Triple LCD display with bar graph
- ◇ TRUE RMS and Peak capture
- ◇ 1000 VOLT input protection on all ranges
- ◇ IP67 dust & waterproof rated
- ◇ 4-20mA process loop measurement with % reading
- ◇ DATA HOLD MAX/MIN/recording mode
- ◇ Auto Power OFF
- ◇ Wireless USB interface
- ◇ CAT III 1000V & CAT IV 600V
- ◇ 10A/1000V & 0.5A1000V fuses



**WCM-AL-29L**

## Multimeter Test Leads

Test Leads for Use with Wavecom Multimeters

1100mm Long - Rating: EN 61010-031:2002 + A1:2008 - CAT III 1000V & CAT IV 600V 10A



**WCM-AL-56FL**

## Fused Test Probes with Silicone Test Leads

Silicone Test Leads for Indicating Live Voltage

1500mm Long - Rating: EN 61010-031 - CAT III 1kV 10A CAT IV 600V 10A



**WCM-ST Lead Set**

## Professional Silicone Lead Set with Case

Professional Silicone Lead Set for all types of Multimeters

1800mm Long - CAT III 1000V & CAT IV 600V - 2 Probes, 2 Alligator Clips, 2 Leads

# Clamp Meters



**WCM-2950CL**

## Wavecom 2950CL Clamp Meter

### Features

- ◇ Pocket Size
- ◇ 4000 counts
- ◇ Auto measurement
- ◇ Voltage /Current / Resistance measurement
- ◇ 1000A AC/ 600V / 1000V DC
- ◇ Data hold function
- ◇ Continuity test
- ◇ Diode measurement
- ◇ Select function
- ◇ Low battery indication
- ◇ Auto off function
- ◇ Flashlight (Auto off in 1 minute)



**WCM-3921CL**

## Wavecom 3921CL Clamp Meter

### Features

- ◇ Leakage clamp meter
- ◇ 200mA range
- ◇ Resolution @ 0.1mA
- ◇ 1000A AC
- ◇ 600V AC/DC
- ◇ Data hold
- ◇ Max. reading
- ◇ 5 current ranges - 200mA, 2A, 20A, 200A, 1000A
- ◇ Low battery indication
- ◇ 55mm conductor size
- ◇ 2 samples/s Sampling Rate
- ◇ 100 hour Battery life
- ◇ Calibration certificate included



**WCM-ET-3888**

## Wavecom ET-3888 True RMS Clamp Meter

### Features

- ◇ Highly Versatile Digital Clamp Meter
- ◇ True RMS Measurement for measuring AC Current and Voltage
- ◇ 400A/1000A AC/DC
- ◇ 400V/1000V AC/DC
- ◇ Autoranging for Voltage, Current and Resistance
- ◇ Data Hold Function
- ◇ 40mm  $\phi$  Conductor Size
- ◇ Ergonomic Design

# Earth Resistance Testers



**WCM-4234ER**

## 4 Wire Earth Resistance Tester

### Features

- ◇ Microprocessor-controlled
- ◇ Earth Resistivity ( $\rho$ ) test
- ◇ Earth testing at 2 $\Omega$ , 20 $\Omega$ , 200 $\Omega$ , 2k $\Omega$
- ◇ Earth voltage 0-300V AC
- ◇ Automatic C spike check.
- ◇ Automatic P spike check
- ◇ 2, 3 & 4-wire test
- ◇ LCD display, 2 lines X 16 characters
- ◇ 200 measurement memory
- ◇ Auto ranging
- ◇ Auto power OFF
- ◇ Data hold
- ◇ Robust, compact and easy to carry.



**WCM-4235ER**

## Wire Earth Resistance & Resistivity Tester

### Features

- ◇ Microprocessor controlled.
- ◇ Earth Resistivity ( $\rho$ ) test.
- ◇ Earth testing at 20 $\Omega$ , 200 $\Omega$ , 2k $\Omega$ .
- ◇ Earth voltage : 0-300V AC.
- ◇ Automatic C spike check.
- ◇ Automatic P spike check.
- ◇ 2-Wire test, 3-wire test, 4-wire test
- ◇ LCM display.
- ◇ Robust, compact and easy to carry.



**WCM-4236ER**

## Wire Earth Resistance & Resistivity Tester

### Features

- ◇ Microprocessor-controlled
- ◇ Earth resistivity ( $\rho$ ) test
- ◇ Earth testing at 20 $\Omega$ , 200 $\Omega$ , 2k $\Omega$
- ◇ Earth voltage 0-300V AC
- ◇ Automatic C spike check
- ◇ Automatic P spike check
- ◇ 2, 3 & 4-Wire test
- ◇ LCM display
- ◇ Auto ranging
- ◇ Auto power OFF
- ◇ Data hold
- ◇ 200 test result memory
- ◇ Interval between auxiliary earth spikes is 1.0~50.0m
- ◇ Optical USB to RS-232 data transmission
- ◇ Data can be transferred to PC
- ◇ 2 optical LEDs for data transfer



# Insulation & Loop Testers



**WCM-6211A IN**

## High Voltage Insulation Tester

### Features

- ◇ 10KV Digital High Voltage Insulation Tester
- ◇ Microprocessor-controlled
- ◇ 4 Insulation test Voltages: 1,000V / 2,500V / 5,000V / 10,000V
- ◇ Continuity ranges @ 50GΩ / 125GΩ / 250GΩ / 500GΩ
- ◇ Output Current Limit: 50mA to 100mA
- ◇ Bar Graph Display
- ◇ Test Voltages Rise and Decay can be Observed During Testing
- ◇ Rugged and Durable Carry Case



**WCM-ET-809**

## Analogue Insulation Tester

### Features

- ◇ 250/500/1000 VDC
- ◇ Displays AC mains voltage
- ◇ Low Ω, 500Ω and 3Ω ranges
- ◇ Automatic safety discharge once the test is completed
- ◇ 1mA test current on insulation test of nominal voltage
- ◇ 205mA continuity short circuit
- ◇ Live circuit warning display
- ◇ On line battery display
- ◇ Push & turn locking switch for hands free testing
- ◇ Supplied with high quality lead set



**WCM-4126NA**

## Digital Electrical Network Analyser

### Features

- ◇ Microprocessor-controlled
- ◇ 2 Lines x 16 Characters LCD
- ◇ Auto-ranging / Auto-off
- ◇ One push button operation
- ◇ Low power consumption
- ◇ Better than 3% accuracy
- ◇ Wiring integrity test (display + LEDs)
- ◇ Over temperature protection and indication
- ◇ Stores previous readings
- ◇ Measures:
  - ◇ L-E and L-N AC voltages
  - ◇ L-E and L-N loop impedance
  - ◇ Prospective short circuits L-E and L-N
  - ◇ Earth spike, line and neutral impedances

# General Purpose Testers



**WCM-MFT-4**

## Multifunction Tester

- ◊ For AS/NZS:3000 Testing
- ◊ Performs a Wide Range of Tests:
- ◊ RCD Trip Time/Ramp Tests, Insulation resistance (250V/500V/1000V) Loop Impedance, Non Trip/High Current, PFC & PSC, Low Ohms, Voltage, Polarity
- ◊ Comes with 2 Sets of Test Leads & a Hard Carry Case



**WCM-890PR**

## Phase Sequence Indicator

- ◊ Insulated non-contact safety alligator clips
- ◊ Convenient back cover magnet for fixing to metal panels while in use
- ◊ CAT IV 600V
- ◊ Non-Contact Phase Detector.
- ◊ Flashing LED with Audible alarm.
- ◊ Open phase and phase sequence detection.
- ◊ 3 phase 75AC to 1000AC
- ◊ Frequency range 45 to 65 Hz
- ◊ Cable length 800mm



**WCM-2300LX**

## Light Meter

- ◊ Measurement to 40,000 lux & 4000 fc
- ◊ 0.01 lux resolution & 0.001 fc resolution for high accuracy
- ◊ Auto off function
- ◊ Data hold
- ◊ Peak hold function
- ◊ Low battery indication
- ◊ Calibration mode
- ◊ Over range indication
- ◊ Auto Ranging
- ◊ Lux/ fc function
- ◊ 9 volt battery operation



**WCM-6280 TB**

## Multipurpose Test Box

- ◊ Operating Voltage from 210VAC to 255VAC @ 50Hz
- ◊ RCD Tester (Current & Time)
- ◊ Wiring check (phase, neutral & earth)
- ◊ Loop tester
- ◊ Continuity Testing (up to 300mA)
- ◊ Insulation Testing (up to 1.2kV)



**WCM-188FFF**

## Circuit Breaker Identifier

- ◊ On/Off button and low battery indication
- ◊ Auto power off.
- ◊ Audible tone when a fault is found,
- ◊ Transmitter, receiver, plug and operating instructions.
- ◊ Analogue bar graph display.

# General Purpose Testers



**WCM-165CB**

## Multi-Purpose Cable Tester

- ◊ Tests the correct pin configuration for different kinds of cables -RJ45/RJ11, Coax, USB, BNC cable, multi-wired cables
- ◊ Auto scan or manual check
- ◊ Audible alarm warning for wire status
- ◊ 2 LED module indicators on the master unit which can do both of transmitter and receiver functions for RJ45/RJ11 cable testing. Users don't need to use the receiving unit
- ◊ Checks cable continuity, open status, short status and miss wired
- ◊ Ground (shielded) wire test
- ◊ LED indication for wire status



**WCM-168CB**

## Multipurpose Tone Generator

- ◊ Four transmitter plug types: RJ-11, RJ-45, COAX & Alligator clips
- ◊ Fast and Slow Alternating Tone Options
- ◊ Telephone line polarity check - Tip & Ring side
- ◊ Cable tracing
- ◊ Telephone line status check for Clear, Busy and Ringing lines
- ◊ Continuity check.
- ◊ Includes transmitter plug storage
- ◊ Flashlight function



**WCM-185LCT**

## LAN Cable Tester

- ◊ Designed for RJ45/RJ11 Modular cables, 10/100 Base-T cable and Token Ring Cable
- ◊ Can verify cable continuity, open, short circuit and miss-wired
- ◊ Auto and manual scan functions
- ◊ Ground wire test
- ◊ Remote receiving unit is available for installed cables far away either on the wall plates or on the patch panel.
- ◊ Lock status function
- ◊ Audible alarm warning for wire status
- ◊ Display: LED indication for wire status.



**WCM-180CB**

## Cable Tracer Tone Generator

- ◊ Designed to identify and trace wires or cables within a group
- ◊ Volume control for increased sensitivity and adjustment to suit work environment
- ◊ Recessed on/off button
- ◊ 9 volt battery with a life of approx. 100 hours
- ◊ Headset or handset operation through phone jack



**WCM-5M**

## Microwave Leakage Detector

- ◊ Microwave Leakage Detector
- ◊ Measuring Range: 0 to 9.99 mW/cm
- ◊ Alarm Level: 5.0 mW/Cm2 Power Supply
- ◊ LCD digital readout
- ◊ Audible beep and LED indication at alarm level
- ◊ Single 9V battery

# Milliohm Meters



**WCM-4136 mO**

## Milliohm Meter

### Features

- ◇ Microprocessor controlled
- ◇ Four terminal measurement
- ◇ 5 Ranges from 200.0μΩ to 2000Ω
- ◇ Maximum resolution 100μΩ
- ◇ Three test currents with over-temperature protection
- ◇ Large LCD Display
- ◇ Protection against inadvertent connection to over voltage
- ◇ “Full-featured EnerSave™
- ◇ “EnerSave™ Auto off.
- ◇ Lightweight, robust & compact.
- ◇ Indicators show if reading may be invalid (Rp Ec and temperature)
- ◇ “O-Ring” sealed case.



**WCM-4137 mO**

## Battery Powered Milliohm Meter

### Features

- ◇ Microprocessor controlled
- ◇ Four terminal Kelvin measurement
- ◇ 5 Ranges from 200.0μΩ to 2000Ω
- ◇ Maximum resolution of 100μΩ
- ◇ Three test currents with over-temperature protection
- ◇ Over Voltage protection
- ◇ Large LCD, 2000 count
- ◇ Auto Hold & Auto Power Off
- ◇ Water resistant transit case
- ◇ Invalid test indicators prevent inaccurate measurements
- ◇ Comes 2 sets of test leads (4 wire with 4 alligator clips & 4 wire with 2 Kelvin alligator clips) and 8 AA batteries.



**WCM-6237ER**

## Low Resistance Ohm Meter

### Features

- ◇ Microprocessor controlled.
- ◇ 6 ranges from 2.000mΩ to 200.0Ω.
- ◇ Maximum resolution of 1μΩ.
- ◇ Three test currents with over-temperature protection.
- ◇ Four terminal measurement.
- ◇ Potential lead resistance and current lead resistance checks.
- ◇ Clear & large LCD Display
- ◇ Protection against inadvertent connection to over-voltage (crow bars for current and voltage)
- ◇ EnerSave™ Auto-hold & Auto-off
- ◇ Rechargeable battery operated
- ◇ Robust & compact.
- ◇ Indicators show if reading may be invalid (RP, RC, and temperature).
- ◇ “O-Ring” sealed case.



# Voltage Detectors



**WCM-ET-18**

## Mini Voltage Detector

### Features

- ◊ Non Contact Detection
- ◊ Bright LED with Audible Alarm
- ◊ 50VAC to 1000VAC Operation
- ◊ On/Off Button for Longer Battery Life
- ◊ Flashing LED Light Indicator
- ◊ CAT III 1000VAC
- ◊ Lightweight and easy to use



**WCM-ET-188**

## Electrical Voltage & Continuity Tester

### Features

- ◊ Clear LED indication
- ◊ 1999 counts LCD display with analogue bar
- ◊ AC/DC Voltage detection
- ◊ Polarity detection
- ◊ Single-pole phase test
- ◊ Low impedance test
- ◊ Flashlight
- ◊ Voltage function operates without battery
- ◊ IP64 Rated
- ◊ Rating at CAT III 1000V/CATIV 600V



**WCM-275HP**

## High Voltage Proximity Detector

### Features

- ◊ 8 Voltage settings; 240VAC, 2kV, 6kV, 11kV, 22kV, 33kV, 132kV and 275kV
- ◊ Bright LED Visual Indication
- ◊ Audible Alarm Indication
- ◊ Self-Test selection
- ◊ Detects low Voltage on any systems
- ◊ Non-contact Operation
- ◊ Light weight, Robust and Compact
- ◊ Compatible with Telescopic Hotstick
- ◊ Operating temperature -15C - 55C
- ◊ High impact nylon casing
- ◊ Detects low voltage on any system

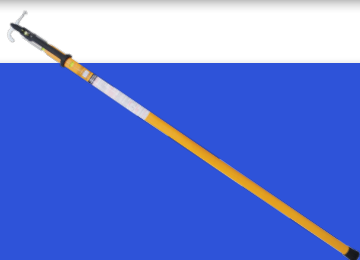


**WCM-278HP**

## IP Rated High Voltage Proximity Detector

### Features

- ◊ 8 Voltage settings; 240VAC, 2kV, 6kV, 11kV, 22kV, 33kV, 132kV and 275kV
- ◊ IP 65 rated
- ◊ High Bright LED Visual Indication
- ◊ Audible Alarm Indication
- ◊ Self-Test selection
- ◊ Detects low Voltage on any systems
- ◊ Non-contact Operation
- ◊ Compatible with Telescopic Hotstick
- ◊ Operating temperature -10C - 50C
- ◊ High impact nylon casing
- ◊ Detects low voltage on any system



**WCM-HS 175-5**

## Telescopic Hot Stick

### Features

- ◊ Push Button release for easy extension and retraction
- ◊ Telescopic Design & Rubber Hook Latch allows for easy assembly, storage and transportation
- ◊ Ergonomic shape for safer gripping and carrying
- ◊ Voltage rating @ 100kV
- ◊ Carry bag Included
- ◊ Complies with IEC 62193 Safety Standard



# Calibrations

## ***All the Major Brands***

Keeping your electrical testers calibrated is the only way to ensure their safety and accuracy. That's why we offer calibration services on a range of our electrical testers, and other testers from the major brands like Fluke, Seaward, Kyoritsu, Metrel and more. Our NATA Traceable calibration services are recognised Australia wide, giving you peace of mind that your testers are always safe and accurate.

## ***Wavecom Manufactured Safety TnT Testers***

Here at Wavecom we are the manufacturer for the range of appliance testers, all the models have been designed and manufactured here at our plant in Adelaide. We have dedicated designed and manufactured calibrations rigs to suit this whole range of product. These calibration rigs automatically bring these test specifications and parameters into spec. Basically these dedicated test rigs we have here calibrate and correct the calibration limits/parameters of the unit, once this is passed the calibration rig acknowledges the calibration service message. All this is mainly done through the firmware on these dedicated rigs. We also provide service in most situations which includes the firmware upgrade in the main processor of the main board of the unit, and also if applicable, hardware modifications and or upgrades are finalised to bring the unit to the latest revision or the latest conformance standards.

## ***Fast Turnaround***

Minimising calibration turnaround is paramount to companies with tight schedules and who depend heavily on their test equipment. We very well understand that time amounts to money, and when your equipment is down, business comes to a total standstill, this is why we offer top priority service at our facilities. Wavecom offer affordable pricing with prompt turnaround times for it's NATA traceable calibration covering a wide range of test and measurement instruments. Prices start from a very low level for multimeters, RCD Testers or basic Appliance Testers.

## ***Easy to Organise***

Booking in your equipment for calibration is easy - just go to our website and click 'Calibrations and Repairs', then 'Book Online Now' and follow the directions.

## ***Equipment we Calibrate:***

*If you do not see your tester on this list, you can call us on 08 8243 3500 and we'll let you know if we can calibrate your equipment.*



**Appliance Testers**



**RCD Testers**



**Digital Multimeters**



**Insulation Testers**



**Clamp Meters**



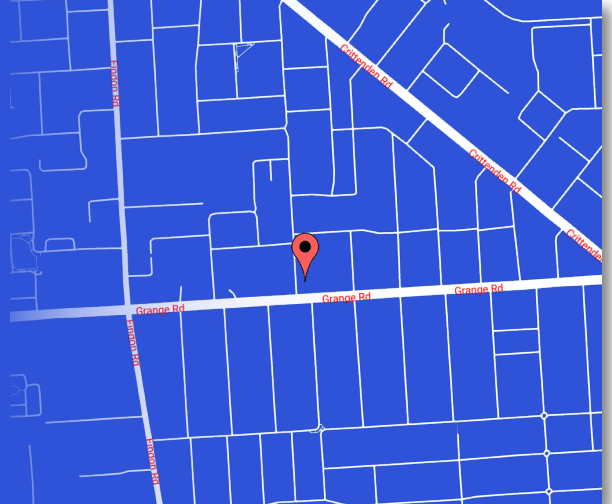
**and more!**

# Contact Us

## South Australia

257 Grange Road  
Findon, SA 5023

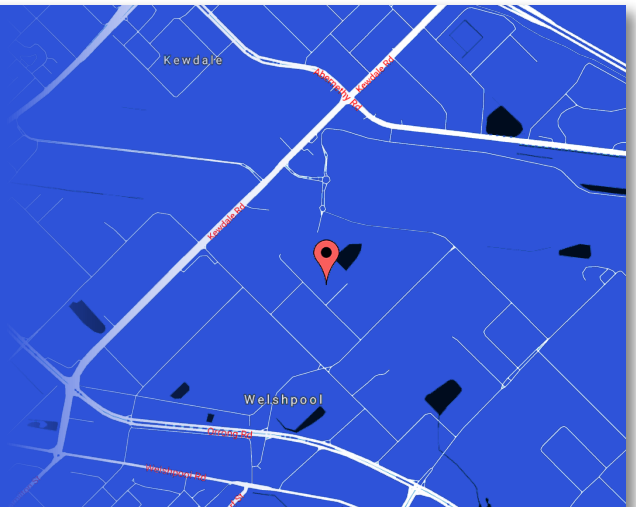
Phone: (+61) 08 8243 3500  
Fax: (+61) 08 8243 3501  
Email: [sales@wavecom.com.au](mailto:sales@wavecom.com.au)



# Western Australia

Unit 2/17 Casino Street  
Welshpool, WA 6106

Phone: (+61) 08 9353 1943  
Fax: (+61) 08 9353 4319  
Email: [saleswa@wavecom.com.au](mailto:saleswa@wavecom.com.au)



# Victoria

Sales Rep:  
Mark Kennedy - 0430 299 164

Phone: (+61) 08 8243 3500  
Fax: (+61) 08 8243 3501  
Email: [salesvic@wavecom.com.au](mailto:salesvic@wavecom.com.au)



# Wavecom Instruments

*The Home of Innovative Technology*



Wavecom Instruments is a Manufacturer and Distributor of Electrical Testing, Measurement and Safety Equipment. Since our beginning in 1993, we've served the Australian Electrical community, providing quality products with reliable service and support. With distributors around the country and offices in SA and WA, Wavecom has become a major player in electrical safety products.

[www.wavecom.com.au](http://www.wavecom.com.au)